



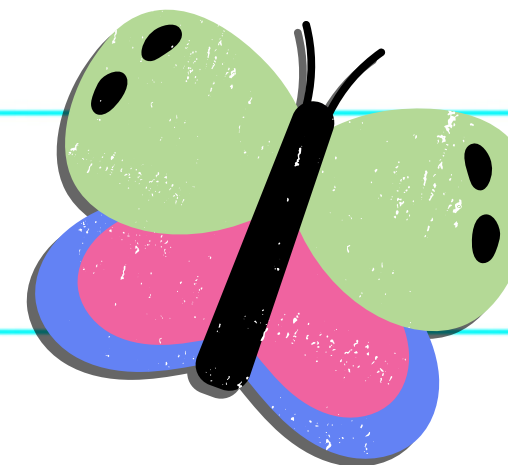
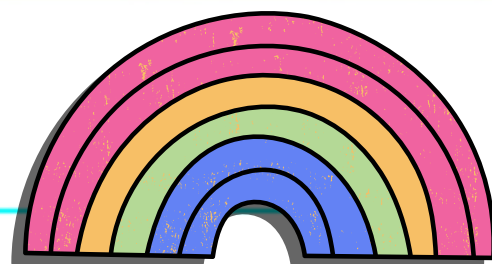
# PARENT RESOURCES

---

Hartselle City Schools--  
Inspiring and Preparing ALL Students for  
Learning, Leadership, and Life

---

**Barkley Bridge Elementary School**



# The First Few Days...

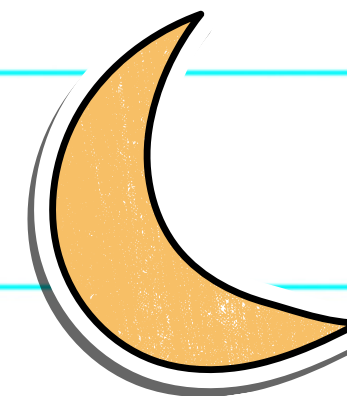
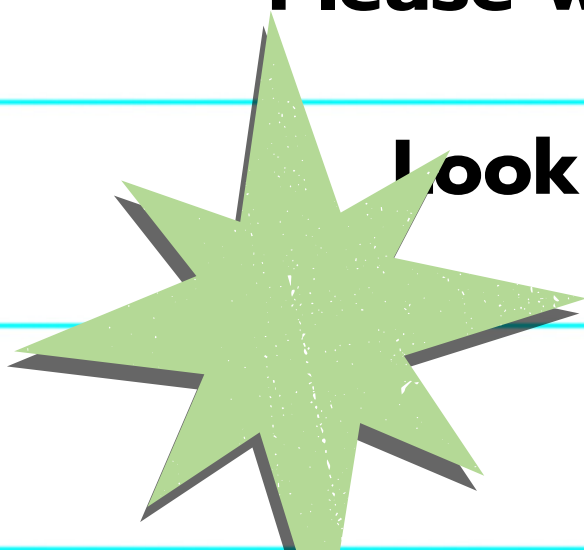
**PK and K go half-days Thursday and Friday. (11:15 and 11:30)  
Walk your child(ren) to their classroom if you wish, the first  
few days. After Wednesday, August 9th they will enter the  
building on their own.**

**Expect slower traffic in the mornings as drivers learn the  
routine.**

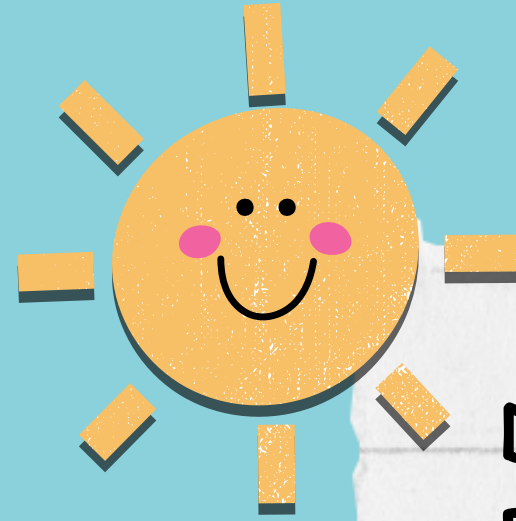
**Expect the afternoon traffic to increase next Monday when  
kindergartners go all day.**

**Please wait until after Labor Day to join us for lunch, Sept.  
5th.**

**Look for paperwork and return as soon as possible.**



# Mornings...



Doors open at 7:10

Breakfast is served in the cafeteria until 7:25.

The gym is open and supervised.

Buses begin dropping off at 7:10

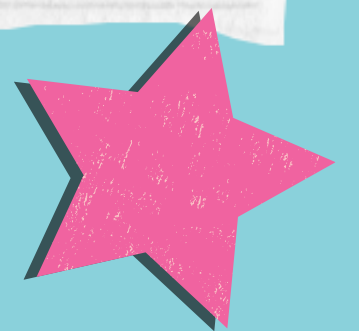
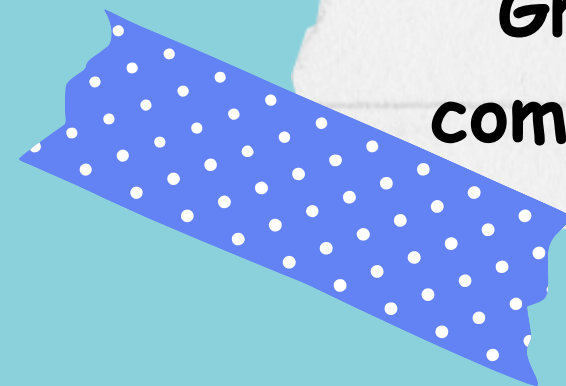
The FIRST BELL rings at 7:30. Students can go to classrooms at this time.

The TARDY BELL rings at 7:40 (No extra time this year)

Punctuality is important

Attendance is important

Grab and Go breakfast is served after 7:25 in common areas for 1st-4th.





# Going Home

Bus riders and Kids Kastle students dismiss first at 2:40

Car Riders: No vehicles pass through the Learning Curve for Dismissal.

Parents must park and walk up to get their student.

Kindergarten dismisses at 2:40

1st and 2nd dismiss at 2:45

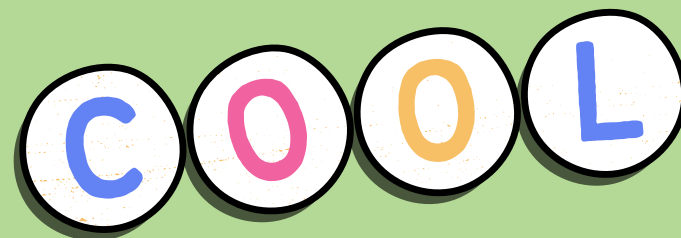
3rd and 4th dismiss at 2:50

\*Older students that have younger siblings, will dismiss with the youngest family member.

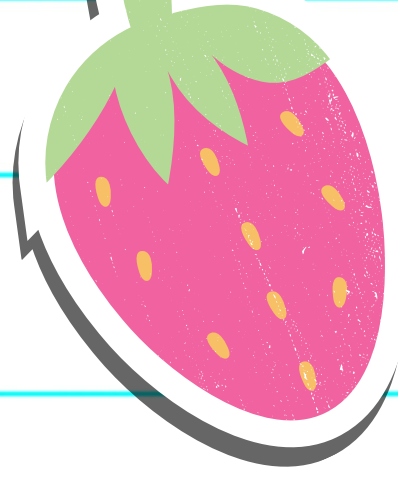
Students must be picked up by 3:05- \$10 Fee- sent to The Bridge, (after-school care)

TRANSPORTATION CHANGES MUST BE MADE BEFORE 2:00- CALL OFFICE

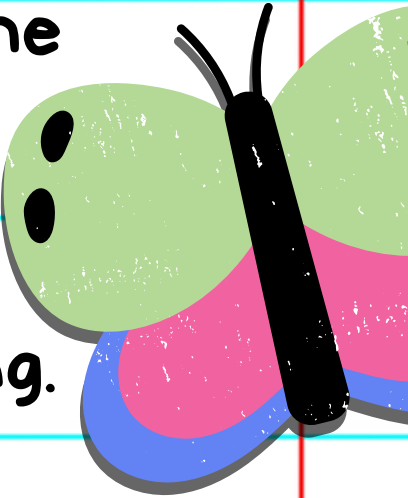
SEND NOTE TO TEACHER IS BEST, DO NOT TEXT CHILD ABOUT-TEACHER MAY ALLOW COMMUNICATION WITH TEXTS- ASK THEM- CAREFUL ABOUT SENDING EMAILS- THEY MAY NOT GET THE MESSAGE







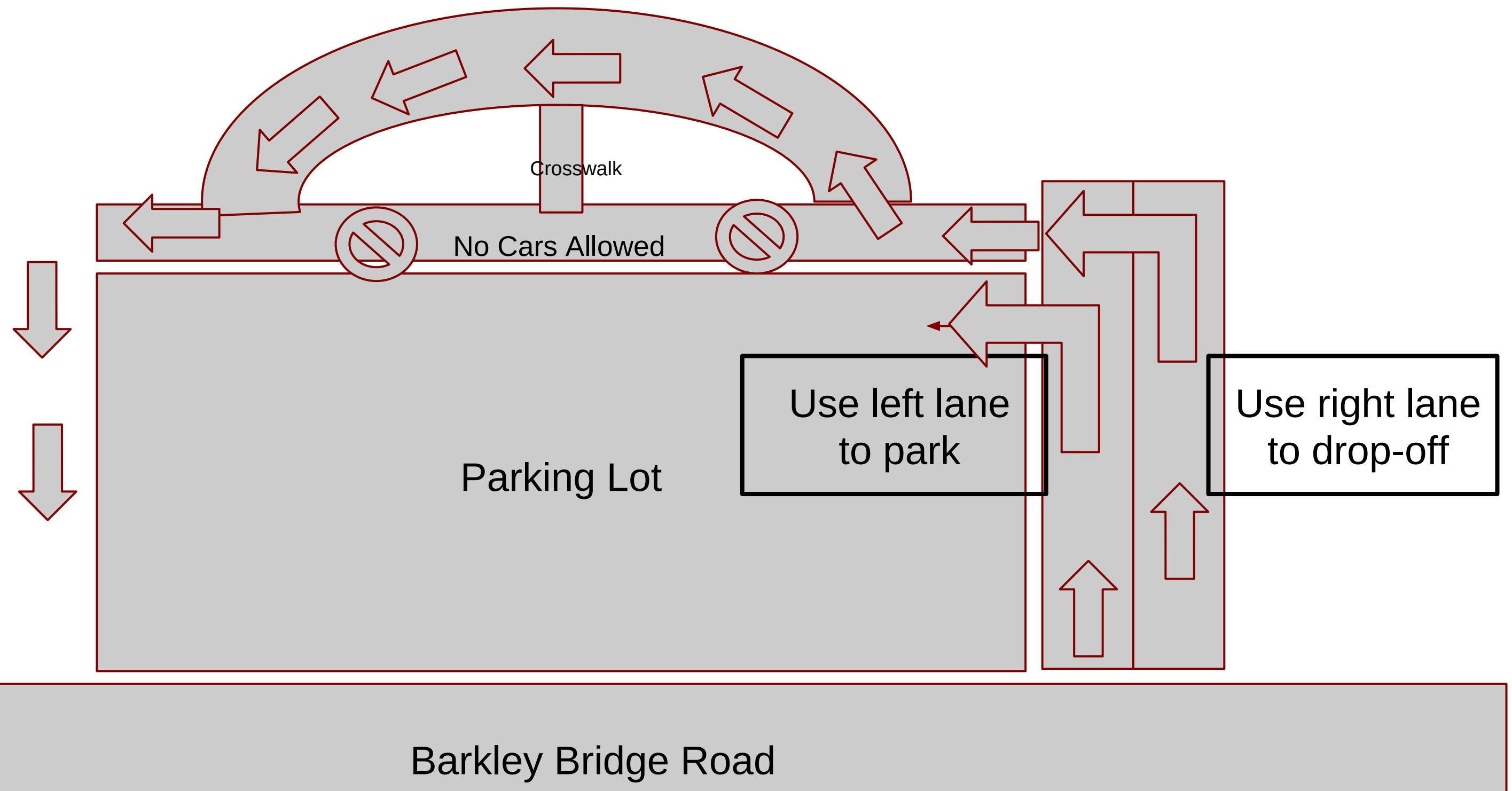
## MORNINGS



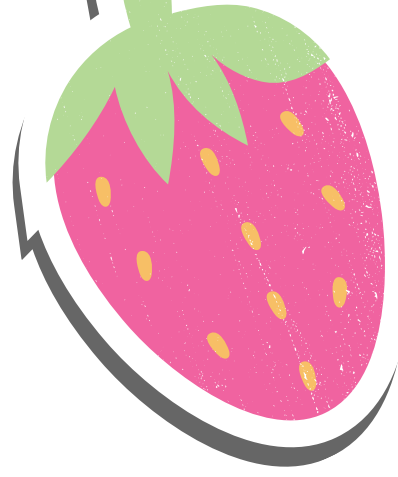
# About the Traffic...

- Two lanes coming in, use the left lane to enter the parking lot. Use the right lane to enter the Learning Curve to drop-off students
- If parking, you must walk your child to the building.
- Cross in the crosswalk only.
- Please follow directions of all crossing guards for safety of all.
- All vehicles dropping off must travel through the Learning Curve
- Pull all the way forward so that six cars can unload at the same time.
- Students should exit the vehicle on the passenger's side.
- If students need assistance exiting the vehicle, please park and walk them to the building.

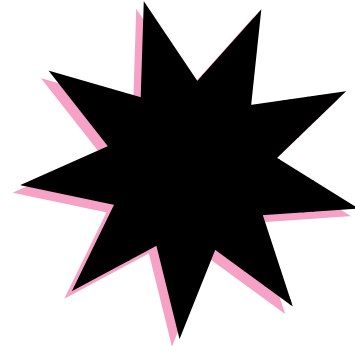
# Morning Traffic Flow





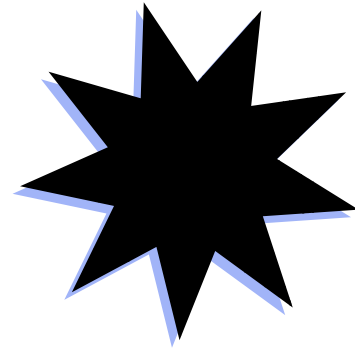


# Money Matters



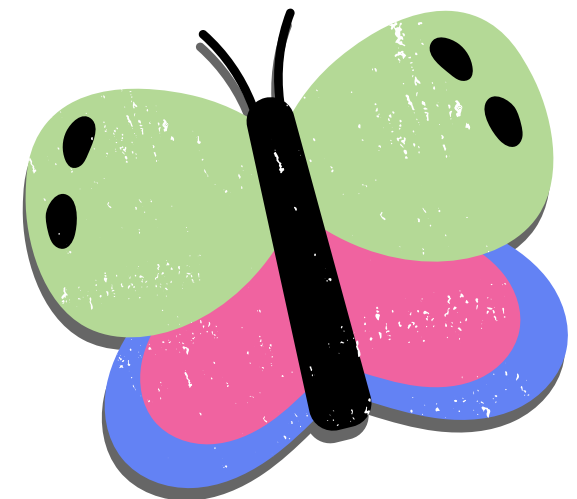
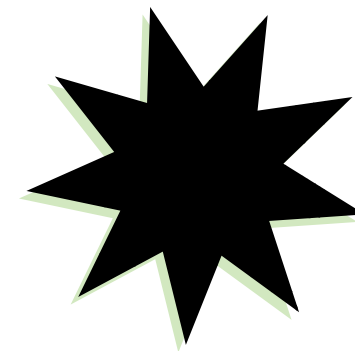
**Meals, fees, fundraising, t-shirts, donations, and field trips are all paid on the MySchoolBucks App or site. Our bookkeeper, Tracy Sharp, can answer questions related to this.**

**[www.MySchoolBucks.com](http://www.MySchoolBucks.com)**

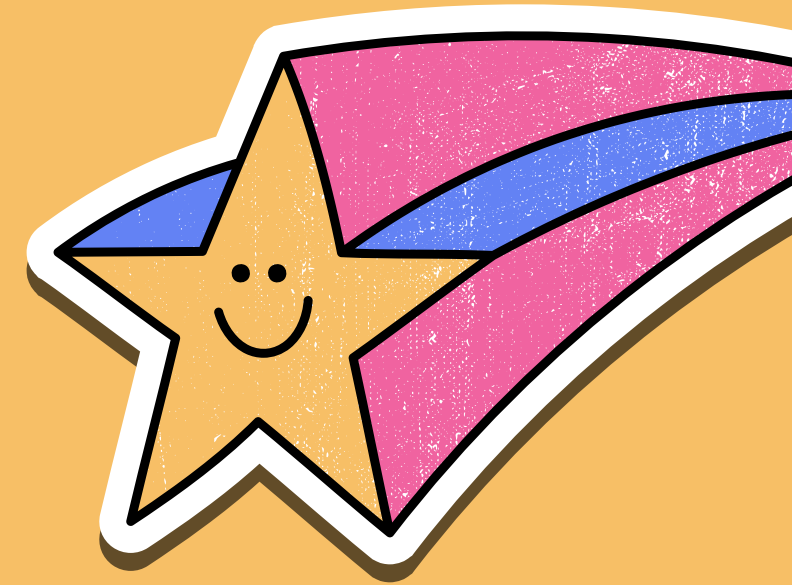


**Applications for free or reduced meals are also online. This cuts down on process time and keeps parents from being responsible for charges if qualified.**

**[www.MySchoolapps.com](http://www.MySchoolapps.com)**



# How Does Lunch Work?



**Visitors will sign-in and wait in the office for your student to get you for lunch.**

**Do not go back to class with student.**

**The student will also escort you back to the office to sign out.**

**Please wait until after Labor Day for visitors(September 5th).**



## **Lunch Meals**

● **Full Price Paid Lunch (Pre-K - 6) \$2.50**    ● **Reduced Price Lunch (Pre-K - 12) \$0.40**

● **Adult Lunch (Volunteer) \$3.50**    ● **Adult/Child Visitor Lunch \$4.00**

## **Breakfast Meals**

● **Full Price Paid Breakfast (All Grade Levels) \$1.75**    ● **Reduced Price Breakfast (Pre-K - 12)) \$0.30**

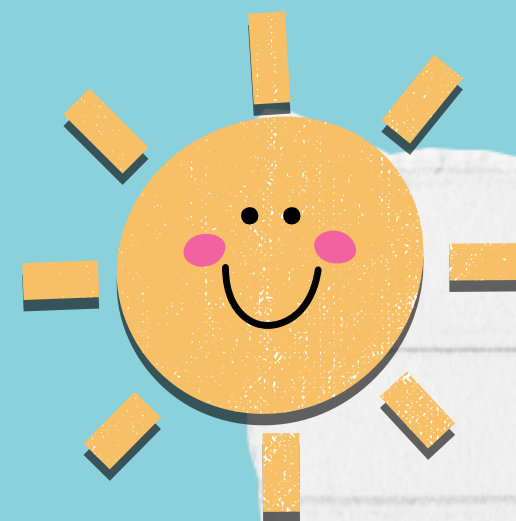
● **Adult Breakfast (Volunteer) \$3.00**    ● **Adult/Child Visitor Breakfast \$3.00**

## **A la Carte Items**

**Breakfast Entree only - \$1.50 (meat or bread entree)**    **Cereal/Cereal Bar Only - \$1.00**

**Breakfast Side Item Only - \$0.75**    **Lunch Entree Only - \$2.00**    **Side Item (Veg, Fruit, Bread) - \$1.00**    **Ice Cream Cup - \$0.75**    **Ice Cream Sandwich, Bar/Popsicle - \$1.00**    **Chips - \$0.75**    **Dessert (School Made) - \$1.00**    **Cookie - \$0.75**    **Plain Water - \$1.00**    **Juice (Carton) - \$0.75**    **Milk (Carton) - \$0.60**

# Code of Conduct



**SUPER**

**The Code of Conduct will be available on our website. Need a hardcopy? Just let your child's classroom teacher know and we will provide one.**

**You will sign that you have read it. Pay special attention to the attendance requirements and the device agreement as there have been updates to those areas.**





# Free and Reduced Lunch Form

Please complete online using the QR code.



**Per the Code of  
Conduct(p.25):  
"Food and drinks in fast  
food packaging are not  
allowed in packaging  
may not be brought in  
the cafeteria by students  
parents or teachers."**

# About Attendance...

- **Students will be considered UNEXCUSED until a written notice has been given to our staff.**

**EXCUSES MAY BE TURNED-IN TO TEACHERS OR EMAILED TO:  
sandra.armistead@hartselletigers.org**

- **Excused Absences : Illness with Doctor Note, Hospitalization, Parent Note\*, Religious, Death of Family Member, Court Subpoena**

**\*Parents Notes: Parents will have 5 notes each semester.**

- **A student must be present for 215 minutes of a school day to be considered present. That translates to the following:**
- **Checking in after 11:05 is considered an absence.**
- **Checking out before 11:25 is considered an absence.**

**Unexcused Absences: 5 Unexcused Absences- Early Warning Court  
7 Unexcused Absences- Truancy Court**



## **HOW DOES P.E. WORK?**

**Lower grades are more about coordination, body awareness, building muscle, etc...**

**As they grow older, there are more competitive activities**

**Appropriate shoes and attire are important**

**A letter will come from Bates and Corder providing more details**

**We have more “inside” days than “outside” days**

**Asthma- Make sure we know**

**Notes when they need to sit out.. recess, too**



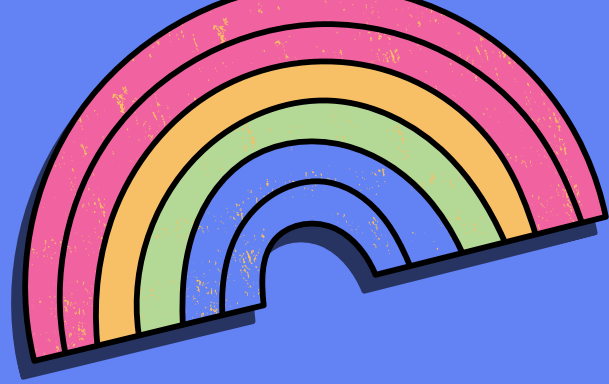
# HEALTH/NURSE INFORMATION

**-Nurse Rebecca Summerford is our full time nurse.**

**-A Health Form and Enrollment Form must be completed for each child every year. Please return these ASAP.**


**-Never send medicine of any kind with your child, you must bring it to the nurse.**





# The Powerschool Parent Portal

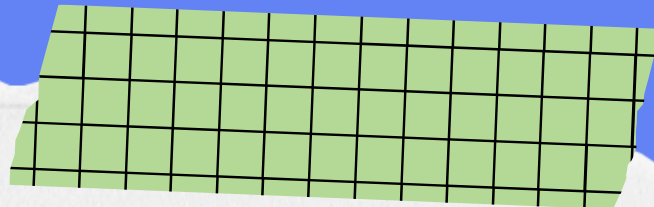


  
A sheet with the login and password will make its way home to you

This allows you to see the grades that have been posted into the teacher's grade book for your child

You may wish to use this, or you may wish to keep up with the papers that come home



  
In addition to keeping you informed with Parent Portal, we will also report grades to you at the mid nine-week grading periods and at the end of the 4 nine-week grading periods

...And you are always invited to call the teacher





# BBE SOCIAL MEDIA!



**Barkley Bridge  
Elementary**



**@barkleybridge**

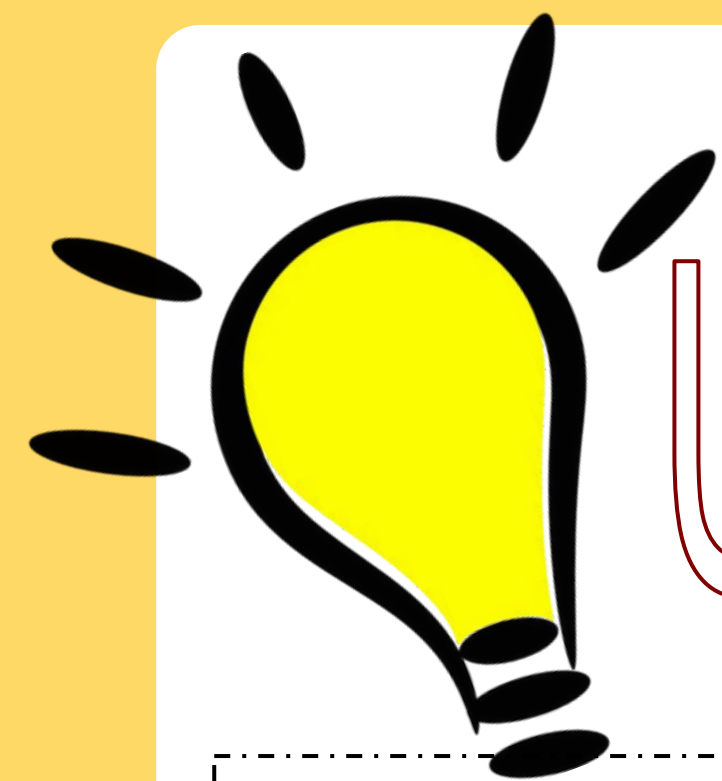


**barkleybridgeschool**



*Stay  
Connected!*



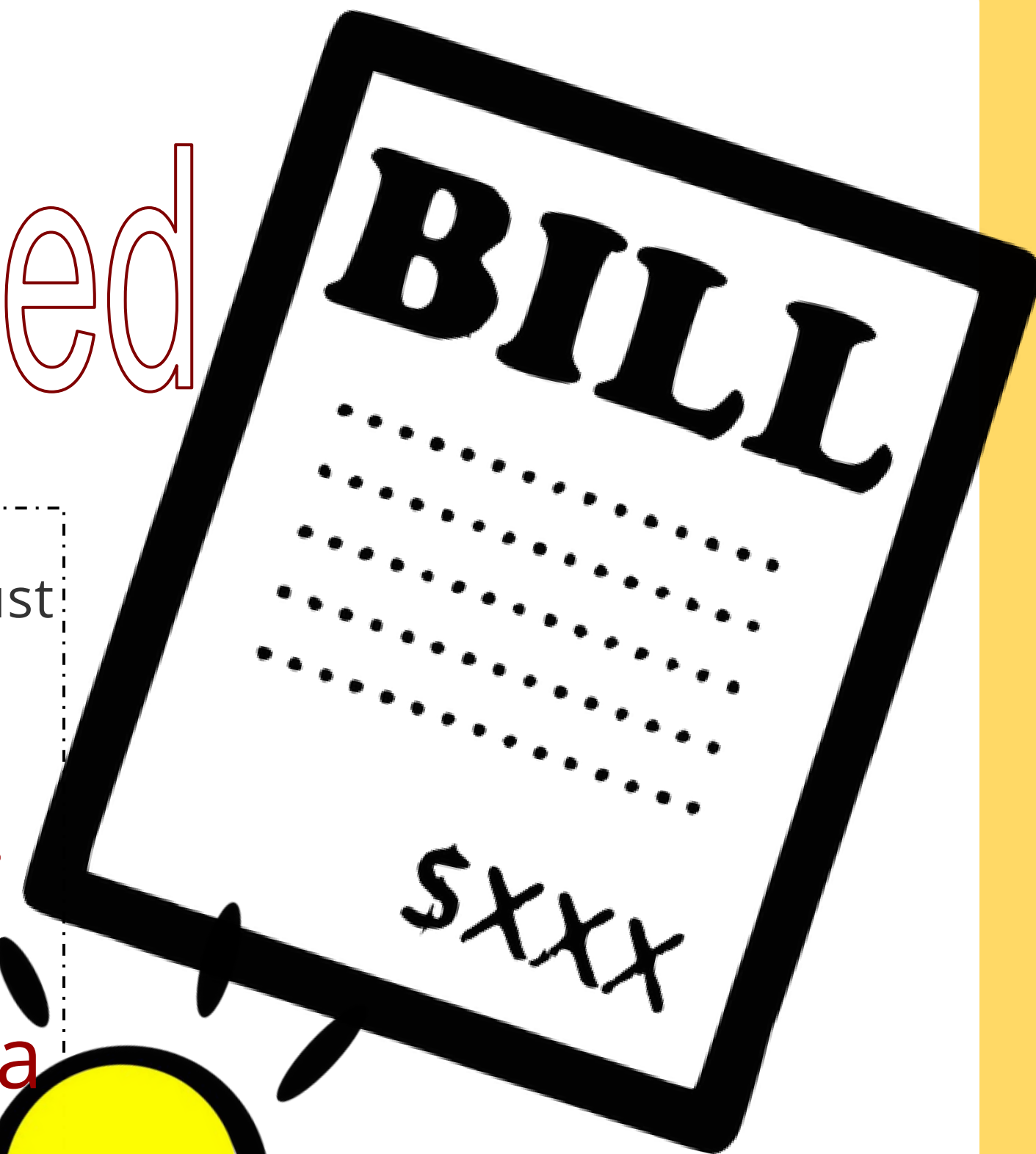


# Utility Bill Needed

A copy of a current(within past two months) utility bill must be submitted with other paperwork for each student .

Please put your child's name on it.

If you have more than one child enrolled at BBE, they will each need a copy with their paperwork.



# Technology

Cell phones and smart watches are not allowed.

If a student needs their cell phone for after school use, they are allowed to have it in their backpack, turned off.





# BIRTHDAY CELEBRATIONS

You can bring cupcakes, treats, etc.

You can purchase ice cream from the cafeteria for the class. You can pay \$10.00 to have a Happy Birthday wish on the digital BBE sign.

-Form on our website

It would be wise to purchase the sign announcement at the beginning of the year. Mrs. Dutton will go ahead and schedule the message at the beginning of the year for the date you request. All requests must be received by the 20th prior to the birthday month.

**Example: Suzy's birthday is November 6th, so the request must be submitted by October 20th.**



# Odds & Ends



- Field Trip Permission Slips- Sign and return to teachers
- No Refunds- Costs of travel are figured into fees
- Extended Day- Full at this time-Wait List
- September 14th - Open House
- Please refer to the Barkley Bridge Website for constant updates.
- Don't Forget-Download Hartselle City Schools App

# Your PTO Needs You

Our BB PTO and parents are a central part of every success we have. You will receive a note from PTO President Jama Howell in your PTO packet. The letter asks you to become a member.

PTO will kick off its activities and fundraisers soon:

Game Day Tattoos

Sock Hop and Book Fair

Tiger Dash, Santa Shop and Spring Fling

Many opportunities to volunteer!

